



## ICI IR-Pad 640 Industrial

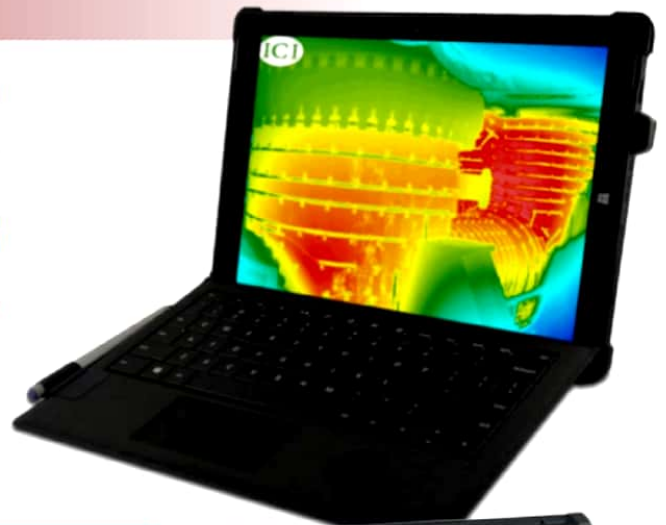


cali 782  
Lindavista  
07300 ciudad de méxico (CDMX)  
01.55.5781.5505 | 01.55.5577.7727

colina alta 3242  
colinas del valle  
64650 monterrey (MTY)  
01.81.8356.7449 | 81.1797.2770

# ICI IR-Pad 640 Industrial

The ICI IR-Pad 640 Industrial infrared camera/tablet system is a winning combination for capturing images in 640x480 pixel resolution quality. This industrial camera is a superior thermal imaging product for indoor and outdoor work environment. Featuring Dual Temperature Ranges, the ultra rugged IR-Pad 640 Industrial uses our customized ICI 8640 infrared camera to capture all of your thermal images and stores them on a 128GB Hard Drive. The unbeatable design is capable of meeting any thermography needs you may encounter in the field of industrial services. Includes our IR Flash Software.



## Features

- IR Camera + Tablet System
- Unparalleled Image Resolution
- Dual Temperature Range
- Widescreen Viewing
- Heavy Duty Tablet Case
- ICI IR Flash Software Included
- Bluetooth Connectivity
- Indoor/Outdoor Use
- Adjustable Neckstrap and Stand
- Portable

## Applications

- Process Control
- Robotics
- Industrial Vision Systems
- Aerial Radiometric Imaging
- Scientific Research
- Building Automation
- Security Monitoring
- Electrical Inspection



## Specifications

- **Detector Array:** UFPA (VOx)
- **Pixel Pitch:** 17µm
- **Pixel Resolution:** 640x480
- **Spectral Band:** 7µm-14µm
- **NETD:** <0.02°C at 30°C
- **Frame Rate:** 30Hz P-Series or 9Hz S-Series
- **Dynamic Range:** 14 bit
- **Dual Temp Range:**
  - Range 1: -20°C - 120°C
  - Range 2: 0°C - 550°C
- **Operation Range:** -40°C to 80°C
- **Accuracy:** +/- 1°C
- **Pixel Operability:** >99%
- 75G Shock / 4G Vibration
- **Dimensions:**
  - 8.25"x12.25"x0.75" - w/o lens
  - (HxWxD +/- .025")
- **Weight:** 3lbs 1.3 oz
- USB 2.0 for Power & Data
- USB, HD Video Out
- Built in Shutter
- Internal NUC
- ICI IR Flash Software

- Integration w/IR Flash Touch
- Analysis/Report Building Software
- **Screen Size:** 12 inches
- **Screen Resolution:** 2160x1440  
16:9 (widescreen)
- **Processor:** 4th Gen Intel Core i5
- **Storage:** 128GB
- **RAM:** 4GB
- **Touch:** Multi-touch
- **Wireless:**
  - Wi-Fi 802.11ac/802.11 a/b/g/n
- Bluetooth® 4.0 Low Energy
- Digital Compass
- Windows 10 Pro
- 5MP Rear Facing Camera
- 5MP Front Facing Camera
- Stereo Microphone
- Stereo Speakers w/ Dolby™ Sound
- Accelerometer
- Gyroscope
- Magnetometer
- Surface Pen
- E-Mail

## Options & Accessories

- 7.5mm Fixed Focus Lens (90x69 FOV, +35 grams)
- 9mm Fixed Focus Lens (69x56 FOV, +40 grams)
- 12.5mm Manual Focus Lens (50x37.5 FOV, +64grams)
- 13mm Fixed Focus Lens (45x37 FOV, +45 grams)
- 19mm Fixed Focus Lens (32x26 FOV, +25grams)
- 25mm Fixed Focus Lens (25x20 FOV, +50grams)
- 30mm Manual Focus Lens (20x15 FOV, +100grams)
- 35mm Fixed Focus Lens (18x14 FOV, +100grams)
- 50mm Fixed Focus Lens (12.4x9.9 FOV, 230grams)
- 60mm Fixed Focus Lens (10.4x8.3 FOV, 460grams)
- 100mm Fixed Focus Lens (6.2x5 FOV, 460grams)



